

Callings

in the Church of the Saviour

Vol 2, Issue 4 • Winter 2013

Watershed Discipleship Roundtable

By Chris Grataski

In November, over 30 activists, pastors, and scholars from across the continent gathered at Dayspring for an intensive and strategic meeting concerned with radical discipleship and bioregionalism. This “Watershed Discipleship Roundtable”—convened by Ched Myers and Chris Grataski—was an attempt to bring together leading-edge practitioners working at the intersection of faith, social justice, and ecological practice, and sought to explore potential for collaborative and strategic action in this unprecedented time of intersecting oppressions and climate catastrophe.

Recognizing that we are in an ecological endgame that demands serious and sustained engagement from people of faith, the roundtable sought to catalyze a continental-scale Alliance of faith-based practitioners around what is being called “watershed discipleship.”

“Watershed Discipleship” names a fresh approach to contextual theology and practice that seeks to make explicit the connections between faith-based work for personal, social, and ecological healing. Convinced that the biblical vision of shalom is nothing less than a vision of profound personal and eco-social emancipation, practitioners of watershed discipleship acknowledge that violence, spiritual atrophy, dehumanization, and illness always occur within and have an effect upon actual places and ecosystems, and that the personal, social, and ecological problems that stalk human history actually arise from the same root pathology. Watershed Discipleship starts from the conviction that the gospel is concerned with precisely this pathological matrix, and that the vocation of the church should follow suit.



Watershed discipleship is rooted in the perception that, as Wendell Berry has said, “The question that must be addressed is not how to care for the planet, but how to care for each of the planet’s millions of human and natural neighborhoods, each of its millions of small pieces and parcels of land, each one of which is in some precious way different from all the others.”

Chris Grataski is a permaculture teacher from Lynchburg, Virginia.

The Church of the Saviour Council

Bread of Life • Dayspring Church • Eighth Day • Festival Church • Friends of Jesus
Jubilee Church • New Community • Potter’s House • Seekers

Inward/outward

Holding the Whole

I recently read an article in the journal of the Collegeville Institute for Ecumenical and Cultural Research about the Emerging Church Movement. The ECM, according to one of the authors of a new book about it, is a "religious orientation that encourages individual autonomy, reflects a deep commitment to interpersonal relationships, and emphasizes innovative practices." It has been said that the collective of churches and missions we call The Church of the Saviour was 'emerging' before 'emerging' was cool!

We might not gather often in one large group, but the C of S churches do share a "religious orientation" that honors the individual in community and holds in common certain practices. I felt our family bond—our unique way of being us—at the last Ecumenical Council meeting. We met at Dayspring so we could go out onto the land to



see and listen to three plots being considered as potential market garden sites. I mean, how many churches make decisions this way—standing in the middle of a field, listening to the breeze, feeling the crunch of grasses beneath our feet, not asking what we want but silently asking the earth what she wants?

What will make us uniquely "us" in the years ahead will be more than what our core classes and disciplines are or having a garden site or any other mission. It will have to do with holding a way that honors each part of the whole, that listens and responds and strives for unity in diversity and diversity in unity. The author of the aforementioned book says the ECM is about conversation. "What's interesting about this conversation is that Emerging Christians see it as an end in itself. The point is not to get to a particular destination; the point is to keep talking, searching, and journeying together." Yes. Yes.

Kayla McClurg is staff person for The Church of the Saviour. She facilitates and writes for www.inwardoutward.org

Editor's Corner

Why Preparation?

As Advent draws to a close, I have been struck by the different ways that people in the biblical stories prepared to encounter the Christ child. For the shepherds, it was overcoming fear. For the wise men, it was a long intentional journey. For Mary and Joseph, it meant trusting each other to live by faith into a whole new reality.

I remember being shocked that preparation for membership at Church of the Saviour could take two years or more because of the number of required classes. The expected preparation seemed prohibitive to me – and I love going to school. What about those people who don't?

Today, each of the C of S churches is wrestling with how to prepare new members for our culture of commitment. Exposure to the life and ministry of Jesus, and developing a daily practice of prayerful listening, contemplative study and self-examination, still seems important for maintaining a healthy body of Christ. How we do that is another matter.

Some of our churches maintain their own School of Christian Living, anchored by a dedicated mission group. At Seekers, we have found the mission group essential for sustaining our school. Over time, that mission group (Learners & Teachers) has guided our membership process toward shorter classes (six weeks) and more ex-

periential learning. We still think that the school experience is a valuable "experiment" in belonging to a committed community.

After any two classes in the school, someone may join a mission group. Just as Jesus apprenticed his disciples, we expect the mission group to continue the process of spiritual formation around their shared sense of call. Some people never move farther toward the core group than belonging to a mission group. Others choose to stay in the school until they have completed the four basic classes and are ready for a mission group and core membership.

Joseph Deck, Director of the Servant Leadership School, and Carolyn Parr, Chair of the Festival Center Board, have been in conversation with different C of S churches about how we might strengthen the preparation process at the SLS. Stay tuned for results of those conversations.

Marjory Zoet Bankson is Chair of the C of S Council and editor/publisher of *CALLINGS*

Layout and printing by DeLong Litho (delonglitho.com)



Bokamoso Tour Returns in January

By Sharon Lloyd

On the night that Nelson Mandela died, members of the Bokamoso Foundation Board gathered at the home of Connie Sullivan to honor Johnny Moloto, the Deputy Chief of Mission for South Africa, who will soon be returning to his home in Pretoria. Last winter, when the Bokamoso Youth Tour was performing at George Washington University, Mr. Moloto joined the South African Ambassador, Ebrahim Rasool, on the dance floor with the students in a wonderful show of support for what Bokamoso represents. "Truly,



Johnny Moloto

they have the spirit of Madela," Moloto said.

This year, the Bokamoso Tour will be coming again [see schedule below]. As their official sponsor, Seekers Church will not only host a performance, but will provide a three-day Career Development Workshop, January 26-28, to hone their skills in resume writing, work-site learning and follow-up with potential mentors. Led by Leslie Smith and Mike Young, the workshop provides one-to-one mentoring for



Sharon Lloyd

each of the 12 young adults and three staff members. In addition, Sharon Lloyd has set up workplace visits for each student so they can "shadow" someone in the field they want to explore.

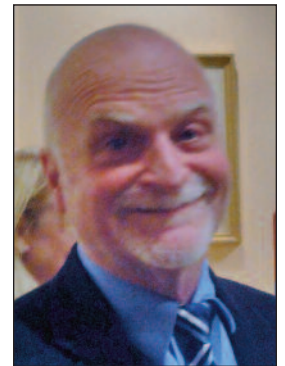


Linda Nunes-Schrag

the talent and voices of young people in Winterveld, South Africa, when he first visited the township back in 1994. Since then, he has returned every year, writing new music and partnering with Leslie Jacobson, theater director at GWU, to organize student exchanges. Last year, donations at the 2013 Dream Breakfast provided for 29 scholarships in nursing, social work, education, vocational training, policing, law and public relations. Since 2008, 123 young Centre graduates have been able to enroll in post-secondary schooling because of the US Tour.

Linda Nunes-Schrag, also a member of Seekers Church, spent time in Winterveld last winter, during the student exchange visit from St. Andrews Episcopal School. She is coaching the staff of the Othandweni Orphanage, a safe place to learn and grow for HIV/Aids orphans. Those children are particularly at risk in this impoverished area.

Roy Barber, a long-time member of Seekers,



Roy Barber

For more information, visit the website: www.bokamosoyouth.org

Sunday January 12

9AM

Service & performance

First Baptist Church

4000 Wallace Rd, North Brentwood MD

Sunday January 26

9:30 AM

Service & Performance

Seekers Church

276 Carroll St NW Wash DC

Friday February 7

7:30pm

Bokamoso Benefit, Performance #1

Marvin Center Theater GWU

800 21st St NW Wash DC

Sunday January 19

11AM

Service & Performance, Lunch

Westminster Presbyterian Church

400 I St SW Wash DC

Monday January 27

6-8pm

Blue Monday Blues, Appearance

Westminster Presbyterian Church

400 I St SW Wash D

Saturday February 8

7:30pm

Bokamoso Benefit, Performance #2

Marvin Center, GWU

Friday January 24

7:30 PM

Winter Concert

St Andrews Episcopal School

8804 Postoak Rd, Potomac MD

Sunday February 2

9:30 & 11am

Service & Performance

Metropolitan Memorial United Methodist Church

3401 Nebraska Ave NW Wash DC

Sunday February 9

9:30 & 11am

Service & performance

All Souls Church

16th & Harvard Sts NW Wash DC

Saturday January 25

11 AM to 1PM

Bokamoso Dream Brunch

St Andrews Episcopal School

8804 Postoak Rd, Potomac MD

Growing New Missions at The Potter's House



By Brennan Baker

Rooted in Adams Morgan since 1960, The Potter's House has always been a place that exists in and for the life of our neighborhood. Our community's radical welcome, open spirit, and willingness to listen to the needs of our city has allowed us to respond in powerfully transformative ways out of this humble cafe and bookstore over the past 53 years. In our current moment, as we move into our next chapter here at 1658 Columbia Road, it is again crucial that we be in tune with the shifting landscape of our city. This is the conversation I want to invite us into as we anticipate the reopening of The Potter's House in the spring of 2014.

Today we find ourselves in the midst of a rapidly changing DC - one full of exciting new developments, but also one overwhelmingly marked by gentrification: large scale redevelopment, an increasing influx of newcomers, rising rents, and the displacement of long time DC residents and communities. How will we in The Potter's House community continue to relate to this change that is almost always uneven and inequitable towards those we claim solidarity with: the poor and those on the margins?

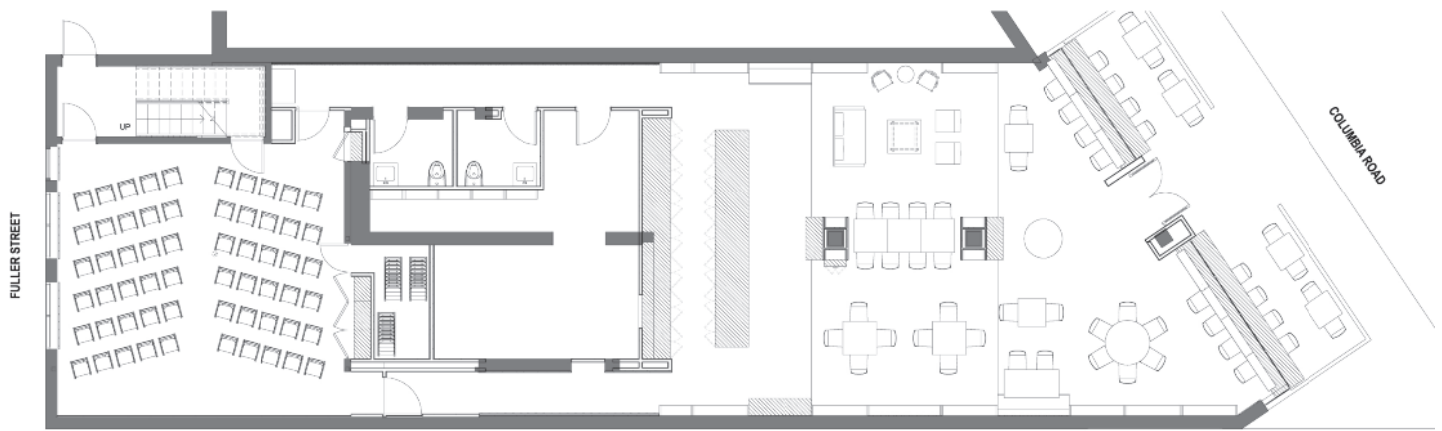
As both a newcomer (I've been in DC for four years) and someone immersed in a community as rooted in DC as Church of the Saviour, this is a question I've returned to again and again during my time in the city, particularly during this Potter's House renewal. What excites me so much about The Potter's House, as an open and

welcoming community space (spaces that are rapidly disappearing) promoting connections across differences, is the potential for mission to evolve towards new forms of collective housing, new ways of sharing money and resources, and new ways of caring for each other. Out of some of our most basic, intimate, and spiritual experiences: everyday encounters around eating nourishing food together, discussing challenging books together, and experiencing the creative power of art together, we have the opportunity to build new communities and new kinship networks across differences that so often divide us.

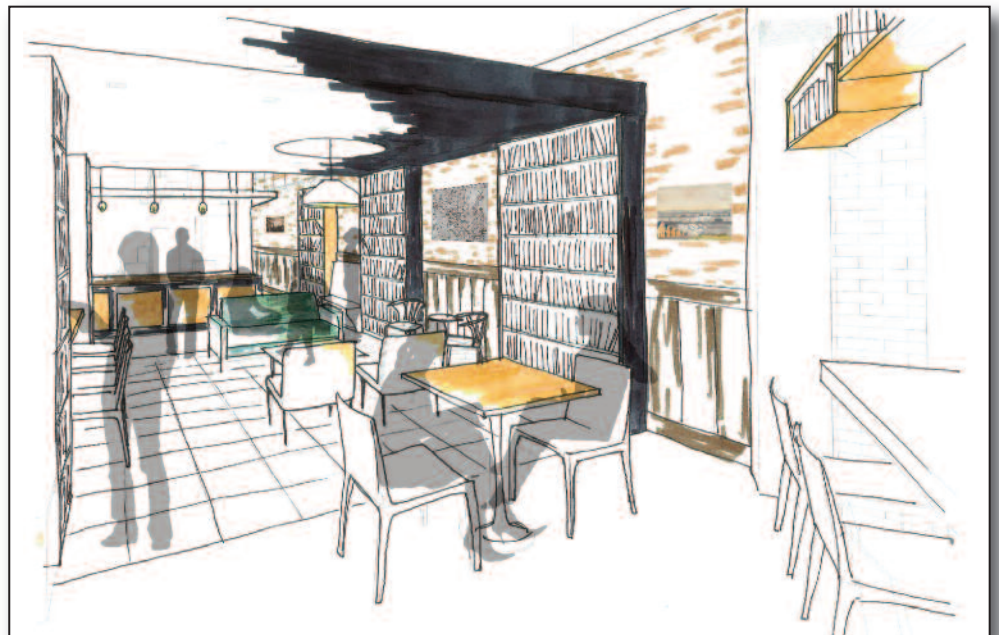
I don't mention these as hopeful idealism or easy answers to the problems our city faces, but as a new beginning for facing them. Something that Gordon spoke about often seems fitting in closing. I will always remember his challenge that we have to understand how the forms and structures of our churches and organizations profoundly affect the transformative power of the work we do. The Potter's House has always been a place to ask these hard questions and will continue to be in the future. Let us ponder how a renewed Potter's House might both strengthen our faith communities and organizations, and open up new possibilities for ministry and community in the future.

Brennan Baker manages the Potter's House Bookstore.





We've been busy here at The Potter's House over the past few months. We've finalized the design for our new space and the plans are in for permitting. We hope you enjoy the new floor plan and the latest renderings from our architects. Construction is scheduled to begin in January, and we'll be on our way to making these designs a reality. If everything stays on schedule, we hope to welcome you into our new space in spring of 2014. Visit pottershousedc.org for more info and the latest updates. Look out for our upcoming online survey. We want to hear from you!



Together We Can...

The Ecumenical Council met at Dayspring in November, in order to visit three prospective sites for their Permaculture Project. One is the old ballfield near the farmhouse. A second possibility is the field below the stone labyrinth and close to the retreat area. A third is the field below the Simple Gifts cottages. Council members met in silent prayer at each of the sites, listening to the land. A decision on which site to start with will be made by the Next Chapter Team at Dayspring by the end of this year.

Jean Brown described the Permaculture Project as an outgrowth of the discernment process which carries forward what the Earth Ministry mission group has been doing on the farm. The permaculture team consists of Jean, Gale Quist, Margie Lance, Chris Grataski and two interns, Ben Patterson and Grace Singletary. The first step will be to prepare a one-acre market garden at one of the three sites.

Ben and Grace, who are living in Lynchburg and studying with Chris, will come to live at Dayspring in January and begin the work. They will be hands-on gardeners. The first stage will be to gather resources, put up eight-foot fencing around the acre (to keep the critters out) and prepare the soil.



Gale Quist

In addition to the silent retreat center, with its three buildings overlooking fields and forests, Jim described the Earth Ministry, with its eco-cottages and greenhouse. He also noted that Dayspring acquired responsibility for Wellspring Conference Center and its five buildings three years ago, when the Wellspring Mission Group set down its call. In all, Dayspring Church is responsible for 18 buildings and 208 acres of land.

With declining numbers and a graying cadre of workers at Dayspring, the Next Chapter Team has developed an "elevator speech" which is designed to "tell the story" in few words:

Dayspring is an ecumenical Christian Church set in the beauty of 200+ acres of woodlands, meadows, ponds, and wildlife. We are a small, deeply committed faith community with shared leadership of worship and ministries including a silent retreat center and creative Earth ministries.

A fund-raising effort is under way to support the project. Margie reported that they have 59 donors so far, with \$69,000 either given or pledged toward the goal of \$114,000 to cover supplies and minimal salaries for Ben and Grace. The hope is that, in time, the permaculture project will bring in enough income to support Dayspring.

Jim Hall gave an overview of the different ministries at Dayspring. In



Council members at Dayspring

Printed on an attractive card, the Next Chapter Team is hoping that this description will draw people who come for produce and, in effect, discover Dayspring. Similarly, they are hoping that another new mission group, Children Exploring Dayspring, will bring children (and their parents) to explore nature and respond to what Dayspring has to offer.

The Next Chapter Team is choosing HOPE in the face of suburban development and the ongoing threat of highway development by Montgomery County. Recent reports that the County Council is tilting toward dedicated bus lanes as the most efficient way to provide rapid transit may well save this land for future generations. Please pray with us for the way to open!



Kip Landon and Jean Brown



Photos on this page were taken by Keith Seat

Webstreaming Faith & Money Network

The Bread of Life Community has five core members and just one mission group which meets Wednesday mornings and supports the Faith and Money, Jubilee Housing, Jubilee Jobs, and the Life Asset Center. Raising the necessary capitalization for the Life Asset Credit Union was Gordon's passion in his final years. Faith and Money will be offering a special internet radio broadcast series. See the announcement below.

Faith and Money Network will be on web streaming radio next year! Mondays at noon from January 6th through March 31st, I will be hosting "Faith and Money: making the connection" on VoiceAmerica. Save those dates to hear such guests as Rev. Roy Howard and theologian Ched Myers, Trip of Perspective leader Kim Montroll and Djaloki Dessables, philanthropists Judy and David Osgood, and more. We will be probing a range of topics that can help you make the connection between your faith and your money. You will be able to find links to those radio programs on our web site in coming weeks.

Please join us. --Mike Little



Servant Leadership School

**Servant Leadership School (slschool.org)
at the Festival Center Winter Semester**

Tuesdays January 21, 2014 to March 11, 2014

Table Fellowship Light Dinner 6pm – 7pm



Tuition is \$50 for first time students, \$100 per class for returning students. Scholarships are available. Can register on-line at www.festivalcenter.org or call Joseph Deck at (202)328-0072 or email at jdeck@slschool.org

Biblical Justice, an Un-American Activity
Ray McGovern

Healing and Hope in a Violent World
Orlando Tizon

Contemplation in Action
Terry Flood

Articulating a Biblical Response to Gun Violence
Christopher Chatelaine-Samsen and Katherine Chatelaine-Samsen

Comparative Study of the Gospels
Joseph Deck

Special Events

Jan 1 . . . Registration opens for the Guatemala Pilgrimage, July 12-22, sponsored by Seekers. Fee of \$1100 covers all in-country costs. Transportation is separate. Info: www.seekerschurch.org.

Jan 10 . . . “Emma’s Revolution” at the Carroll Café (Seekers Church). Benefit for Takoma Radio. Advance tickets: \$20; at the door: \$25. See: www.CarrollCafe.org.

Feb 8 . . . “Argentine Tango & Latin Rhythms” by Ramon Tasat & Emmanuel Trifilio at Carroll Café (Seekers Church). Info: www.carrollcafe.org.

Feb 7-9 . . . Open retreat at Dayspring led by Kayla McClurg, “Saying Yes to Life, Yes to God.” Guided by readings from Etty Hillesum. Fee for weekend: \$200. Register: www.dayspringretreat.org.

Feb 28-Mar 2 . . . Damascus Road Racial Reconciliation Training. Open to all C of S churches. Enrollment is limited to 45 people. \$250. Contact: Dawn Longenecker: dlongenecker@slschool.org.

Mar 7 . . . “Guy Davis Blues” at Carroll Café (Seekers Church). Info: www.carrollcafe.org.

Mar 28-30 . . . Open retreat at Dayspring led by Scott Robinson, “Opening to the Divine Through Sound and Silence.” Using chant, body prayer and contemplative silence. \$200. Register: www.dayspringretreat.org.

Apr 14-18 . . . Quiet Days for Holy Week at Dayspring. The Lodge will be open for silence and solitude. Contact the office to make reservations if you want to stay overnight at the Inn.



Photo by Peter Bankson